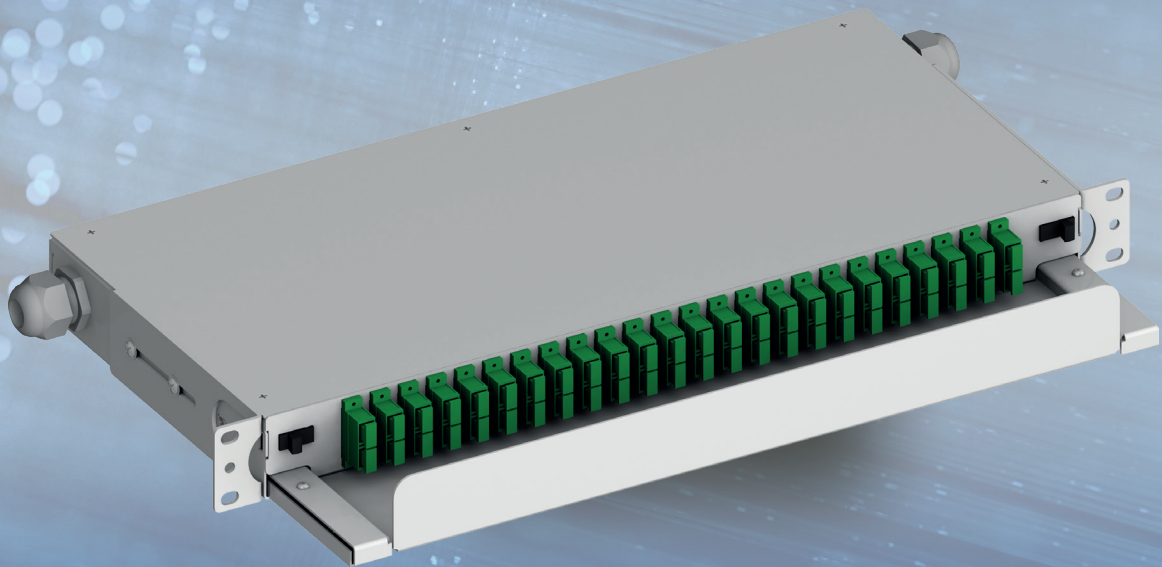


alfafonet[®]
Complete Connectivity Solutions




**RAILSYSTEM 1RU
PATCH / SPLICE PANEL**

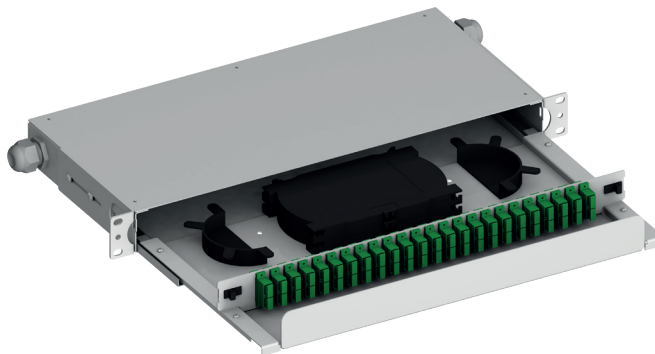
FIBER OPTIC PATCH PANELS
Railssystem


RAILSYSTEM 1RU FIBER OPTIC PATCH/SPLICE PANEL

 Product Family
 Rail Slide


Standarts
 19"
 1 Rack Unit

Protection Rating
 IP 10






H	44	mm
W	430	mm
D	280	mm

Available Colors:


Light Grey (RAL7035)
Black (RAL9005)

Weight


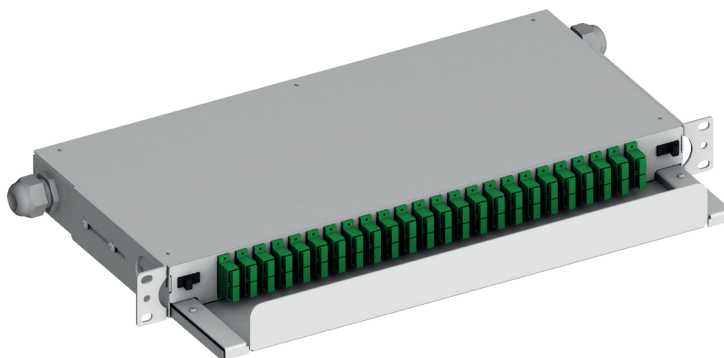
Net	2,3	kg
Gross	2,530	kg

PRODUCT OVERVIEW

The RailSystem Fiber Termination Patch/Splice Panel is designed for use as a rack mount interconnect point where termination and connectivity of up to 48 and 96 fibers are desired. This solution allows for easy access to the front patch cords as well as the splice trays and pigtails after being pulled out. Mounted on telescopic runners to ensure the tray slides in and out with a smooth action. Standard panels are available empty for complete field configuration, half-loaded with adaptor plates for field termination and cable assembly installation, or stubbed with a factory-installed cable assembly of a user specified length. The panel also offers multiple cable entry solutions, up to product standard cable entry points for, loose tube, tight buffer, preterminated and steel tape armoured cable. Each panel has integrated strength member tie positions.

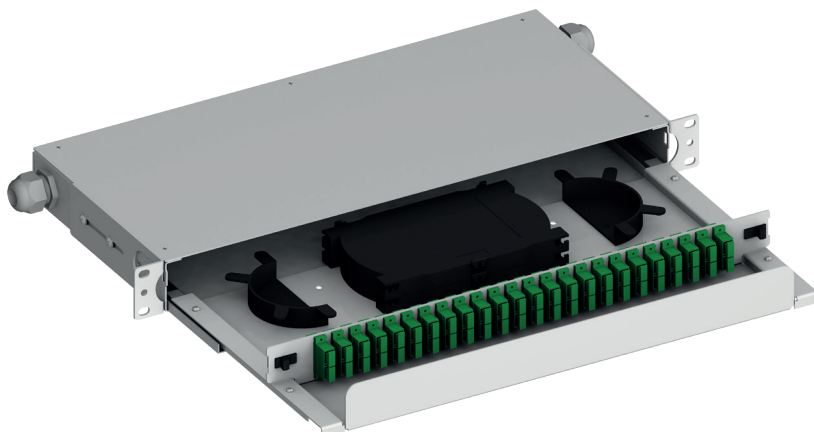
Features

- ▶ Up to 48 fibres in 1RU
- ▶ Accepts loose tube, distribution and pre terminated cables
- ▶ Changeable adaptor plates
- ▶ Plastic lock for fixing the tray
- ▶ Pulled-open front pulled-out tray
- ▶ Optional splice tray kit for on site conversion to patch and splice panel



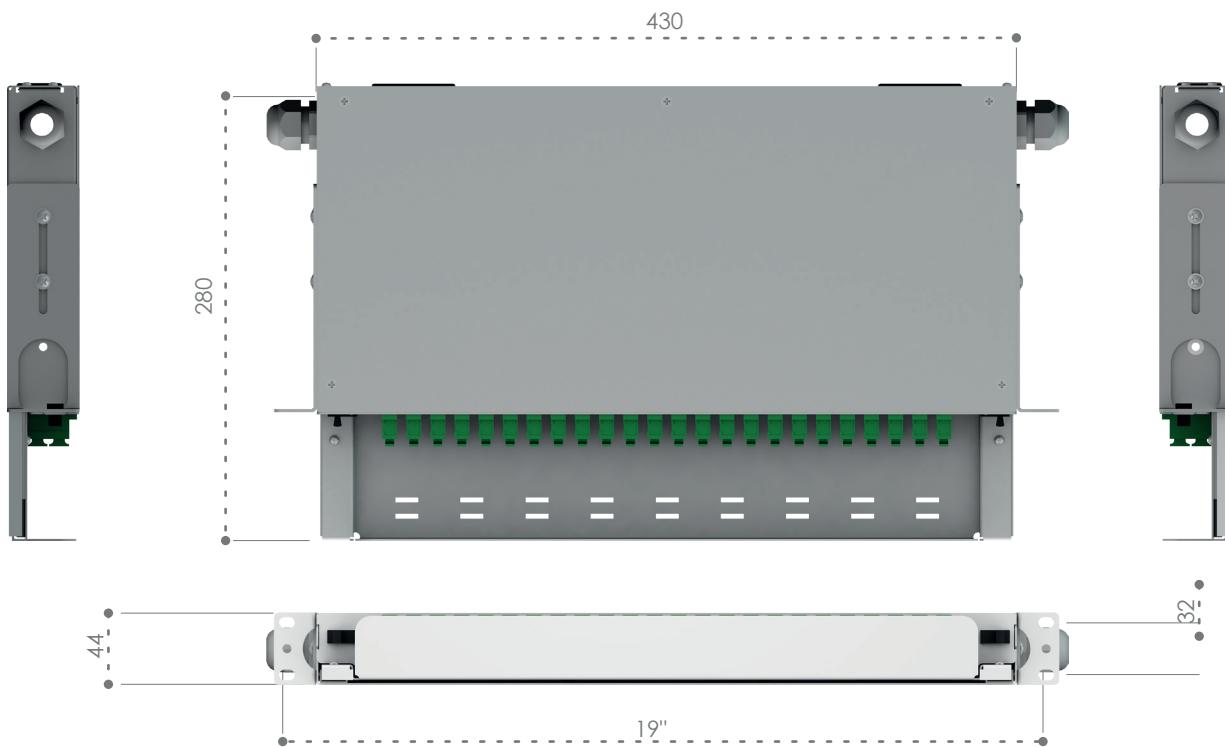
Specifications

- ▶ Cold Rolled Steel or Aluminium
- ▶ Durable textured powder coat finish available in black or white
- ▶ Universal 19/21" EIA/TIA rack compatibility
- ▶ Front cable manager for patch cords
- ▶ Front and back side mounting options
- ▶ Standard cable stub location is left/right side
- ▶ Optional cable stub location is rear

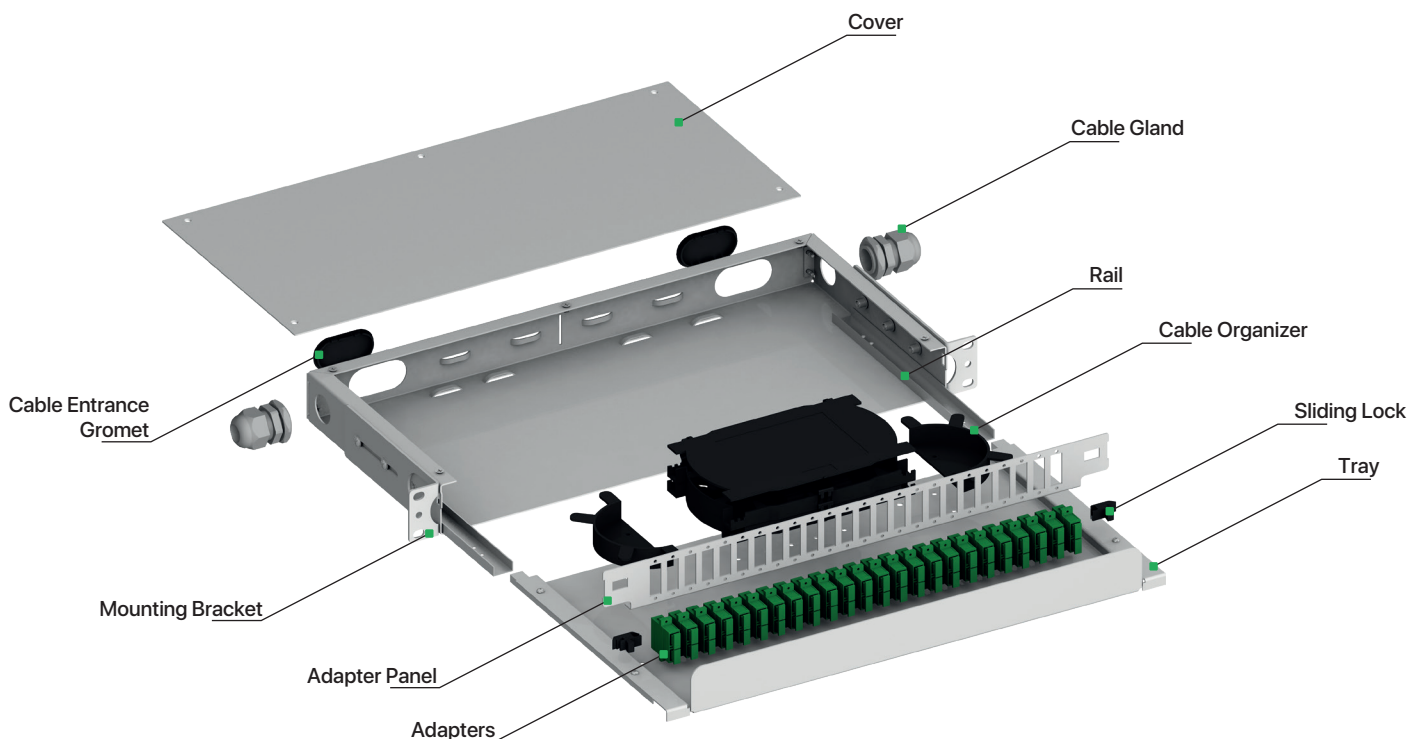


RAILSYSTEM 1RU FIBER OPTIC PATCH/SPLICE PANEL

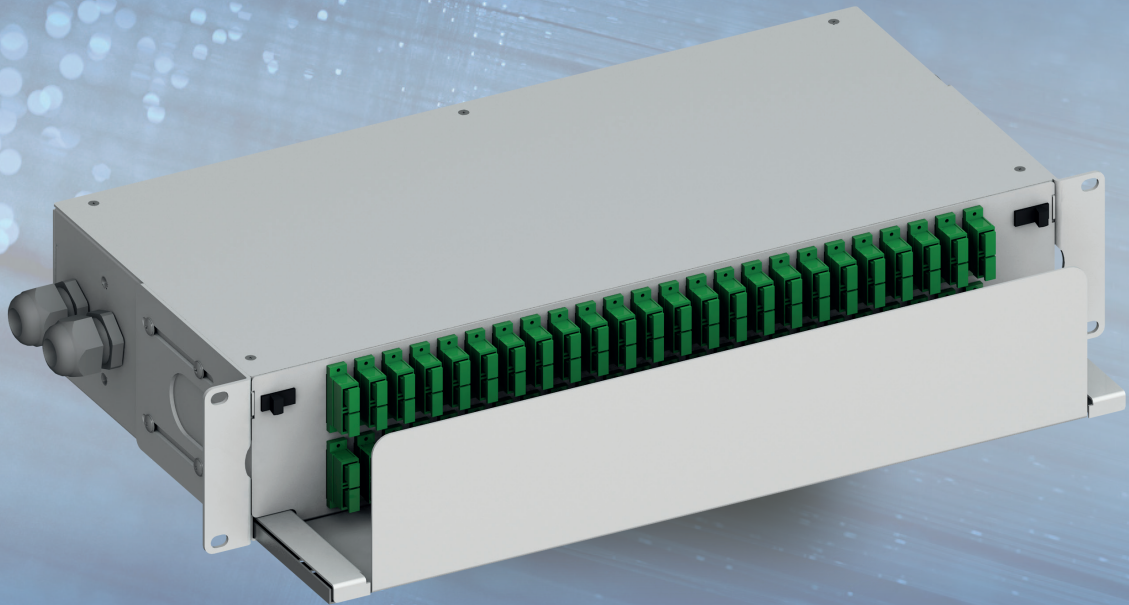
Dimensions



Exploded View



alfafonet[®]
Complete Connectivity Solutions




**RAILSYSTEM 2RU
PATCH / SPLICE PANEL**

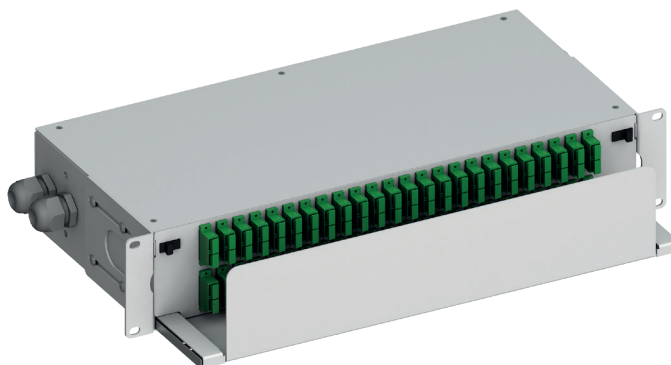
FIBER OPTIC PATCH PANELS
Railssystem


RAILSYSTEM 2RU FIBER OPTIC PATCH/SPLICE PANEL


	Product Family
	Rail Slide


<input type="checkbox"/>	Standarts
<input type="checkbox"/>	19"
<input type="checkbox"/>	2 Rack Unit

Protection Rating	
	IP 10



	H	88 mm
	W	430 mm
	D	280 mm

Available Colors:	
	Light Grey (RAL7035)
	Black (RAL9005)

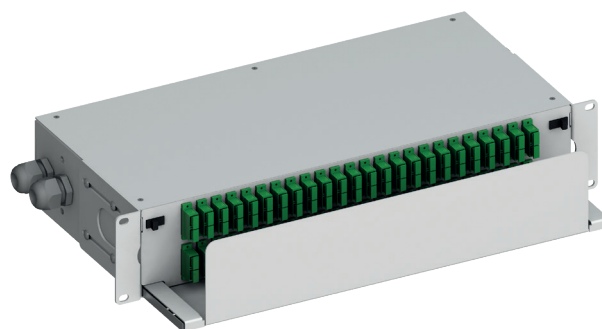
Weight		
	Net	3,7 kg
	Gross	4,12 kg

PRODUCT OVERVIEW

The RailSystem Fiber Termination Patch/Splice Panel is designed for use as a rack mount interconnect point where termination and connectivity of up to 48 and 96 fibers are desired. This solution allows for easy access to the front patch cords as well as the splice trays and pigtails after being pulled out. Mounted on telescopic runners to ensure the tray slides in and out with a smooth action. Standard panels are available empty for complete field configuration, half-loaded with adaptor plates for field termination and cable assembly installation, or stubbed with a factory-installed cable assembly of a user specified length. The panel also offers multiple cable entry solutions, up to product standard cable entry points for, loose tube, tight buffer, preterminated and steel tape armoured cable. Each panel has integrated strength member tie positions.

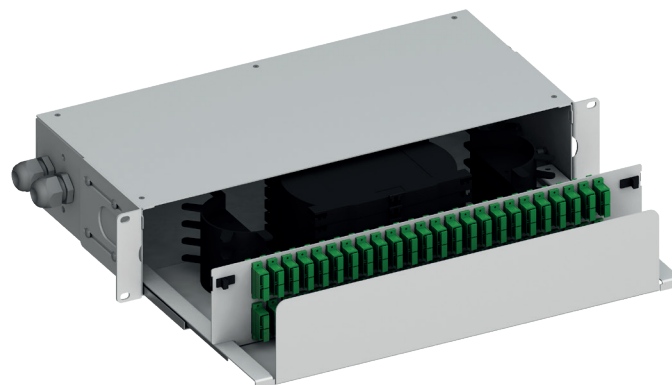
Features

- ▶ Up to 96 fibres in 2RU
- ▶ Accepts loose tube, distribution and pre terminated cables
- ▶ Changeable adaptor plates
- ▶ Plastic lock for fixing the tray
- ▶ Pulled-open front pulled-out tray
- ▶ Optional splice tray kit for on site conversion to patch and splice panel



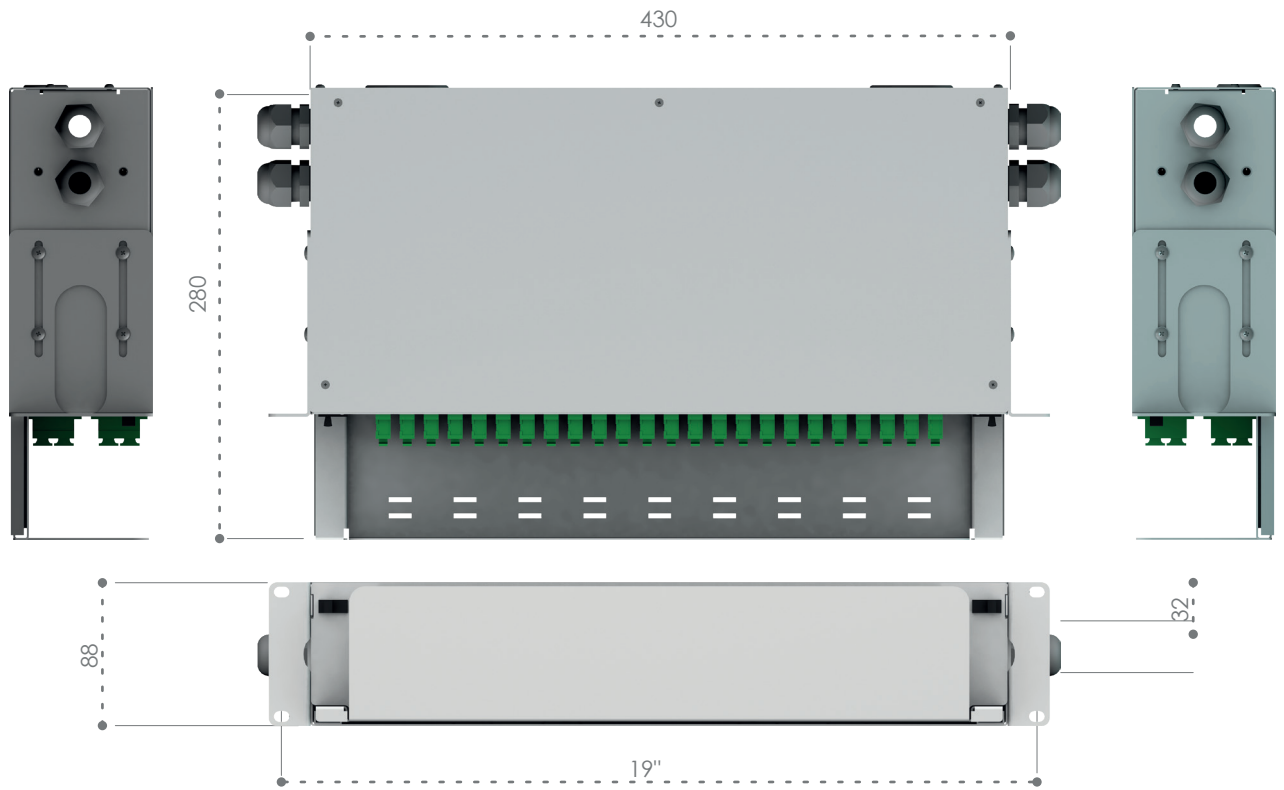
Specifications

- ▶ Cold Rolled Steel or Aluminium
- ▶ Durable textured powder coat finish available in black or white
- ▶ Universal 19/21" EIA/TIA rack compatibility
- ▶ Front cable manager for patch cords
- ▶ Front and back side mounting options
- ▶ Standard cable stub location is left/right side
- ▶ Optional cable stub location is rear



RAILSYSTEM 2RU FIBER OPTIC PATCH/SPLICE PANEL

Dimensions



Exploded View

